



# RETURN MANUAL

Standard procedures for  
receiving and returning  
equipment

---

# CONTENTS

- 3. Dear customer
  - 4. Procedures for receiving equipment
  - 5. The return process
  - 6. Packing instructions for wall formwork
  - 8. Packing instructions for NOE wall accessories
  - 10. Packing instructions for timber beams
  - 11. Packing instructions for HV deck system
  - 13. Packing instructions for other beam systems
  - 15. Packing instructions for Megashore and Alu Board
  - 20. Packing instructions for RSK and BKS
  - 22. Packing instructions for steel props and accessories
  - 26. Packing instructions for fall protection systems
  - 28. Examples of correct and safe packing for transport
  - 29. Examples of incorrect and unsafe packing for transport
  - 30. Closing
-





# Dear Customer

---

Thank you for choosing Ischebeck Nordic AS as your formwork supplier. We look forward to a good and efficient working relationship.

Before you begin, please read this Return Manual carefully. Following these guidelines will help ensure a smooth process and avoid unnecessary additional costs.

If you have any questions during the process, please contact us by email at **retur@ischebeck.no** or by phone on **+47 69 28 29 00**.



# Receiving Equipment

## Important information

---

### ■ Upon receipt of equipment:

Check that all equipment has been received and is in good condition. If any defects, missing items, or damage are identified, these must be reported to us within 2 working days so that we can rectify the issue.

### ■ When unpacking:

Keep pallets, frames, dunnage, and rubber spacers for wall formwork for return transport, as shown in the packing instructions.

### ■ Ensure you are familiar with the contents of this manual:

By reading the entire Return Manual now, the return process will be simpler at the end of the rental period.





# The Return Process

## How to proceed

### ■ Return notification:

Send an email to **retur@ischebeck.no** at least 3 working days before the planned return. Unnotified returns will be subject to a fee of NOK 5,000.

### ■ Material list:

Once you have notified us of the return, you will receive a material list for the project. Please complete the list and return it to **retur@ischebeck.no**.

### ■ Confirmation of collection:

Once the return is scheduled, we will inform the site of the collection date.

### ■ Preparing the return:

Ensure that the equipment is cleaned, correctly stacked, and packed in accordance with the instructions in this document. Use strapping bands where required. Inadequate cleaning or incorrect packing may result in additional charges due to extra handling.

### ■ IMPORTANT: We reserve the right to refuse returns if the equipment or its packing makes transport or unloading at our warehouse unsafe.

### ■ Inspection upon receipt

When the equipment arrives at our warehouse, it will be counted and checked against the submitted material list. If a completed material list has not been submitted, the customer accepts Ischebeck Nordic's count as final.

# Packing Instructions for Wall Formwork

Panels and corner elements of different sizes must be packed with the plywood facing upward.

Product type	Packed as follows:
5300 x 2650	2 pcs per stack
3310 x 2650	3 pcs per stack
2650 x 2650	4 pcs per stack
1325 x 3310	10 pcs per stack
1325 x 2650	10 pcs per stack
1250 x 3310	10 pcs per stack
1250 x 2650	10 pcs per stack
1000 x 3310	10 pcs per stack
1000 x 2650	10 pcs per stack
1325 x 1325	10 pcs per stack
1250 x 1325	10 pcs per stack
1000 x 1325	10 pcs per stack
750/615/550/500/450/400/250 x 1325	10 pcs per stack
750/615/550/500/450/400 x 3310	10 pcs per stack
750/615/550/500/450/400 x 2650	10 pcs per stack
250 x 3310/2650	10 pcs per stack OR storage rack with corner elements
Inside/outside corner	Storage rack OR stack
Inside/outside adjustable corner	Storage rack OR stack
Shaft corner 3310/2650/1325	Storage rack OR stack
All NOE Alu-L types	Packed on pallets, max. 20 pcs





## WALL PANEL 1

---

Rubber spacers must be placed between each wall panel and at all four corners.

All wall panels must be stacked on dunnage.



## WALL PANEL 2

---

All wall panels must be returned with the plywood or composite surface facing upwards.

See table for the number of panels per stack. Use steel strapping or tensioning bands to secure the stacks.

# Packing Instructions for NOE Wall Accessories

Components for wall formwork, small parts and brackets must be packed as follows:

Item no.	Item	Packed in/on	Quantity
<b>NOE Wall Accessories</b>			
9078010201	Toplock w/wedge 0-42	Mesh transport box	150
9078010401	Toplock adjustable 0-100	Mesh transport box	100
9078010601	T-2000 alignment clamp	Mesh transport box	30
9078011610	Push-pull prop RS 3 + RS 1	Storage rack	15
9078011650	Push-pull prop RS 4 + RS 2	Storage rack	15
9078011701	Push-pull prop RS 5 + RS 2	Storage rack	15
9078012001	Walkway bracket	Storage rack (small)	20
9078012401	Rail post 1380 mm	Storage rack (small)	60-80
9078013001	Combi beam 100	Mesh transport box	70
9078012901	Combi beam 142	Storage rack	39
9078013101	Combi beam 250	Storage rack	30-33
9078011401	Alignment channel	Mesh transport box	100
9078712001	Combisafe gavelgrind	Mesh transport box	10
0620720009	Combi plate 15 100 x 140 mm	Mesh transport box	1000
0620720025	Combi plate 20 140 x 200 mm	Mesh transport box	1000
9078010101	NOEtop Multi-claw	Mesh transport box	200
9078012801	Alu channel 1.20 m	Dunnage, ( 1.20 m)	25
9078012501/02	Platform w/out hatch	Pallet	10





## COMBI BEAM 250

Packed in 3 layers with 10 or 11 pcs per layer.



## COMBI BEAM 140

Packed in 3 layers with 11 pcs per layer.



## PUSH-PULL PROPS

Packed in 3 layers with 5 pcs per layer.

Ensure dunnage is placed between each layer.

# Packing instructions for timber beams

All timber beams must be packed  
as follows:

Item no.	Item	Packed in/on	Quantity
Timber beams			
907822...	H20 timber beams (all lengths)	Dunnage – 1.01 m	50



## H20 TIMBER BEAMS

Packed with 5 pcs per layer  
(width) and 10 pcs per layer  
(height), max. 50 pcs per  
stack.

All timber beams must be  
packed on dunnage.



# Packing instructions for HV deck system

HV deck components must be packed as follows:

Item no.	Item	Packed in/on	Quantity
<b>HV deck system</b>			
O120490030	Drop Head Titan HV	Mesh transport box	200
O120490011	Main Beam Titan HV 3.5 m	Storage rack	18
O220490010	Main Beam Titan HV 2.3 m	Storage rack	18
O120490008	Main Beam Titan HV 1.7 m	Storage rack	22
O120490006	Main Beam Titan HV 1.5 m	Storage rack (small)	22
O120490004	Main Beam Titan HV 1.15 m	Storage rack (small)	22
O120490021	Secondary Beam Titan HV 1.7 m	Storage rack (small)	52
O120490018	Secondary Beam Titan HV 1.5 m	Storage rack (small)	52
O120490015	Secondary Beam Titan HV 1.15 m	Storage rack (small)	52
O120490051	HV panel Titan HV	Panelbox 14	14
O120490060	Guard Rail Post Titan HV	Storage rack	40
O120490061	Corner Guard Rail Post Titan HV	Storage rack	40
O620490052	HV Filler strip 172 x 21 x 900 mm	Mesh transport box	150
9078270060	HV Filler strip 172 x 21 x 600 mm	Mesh transport box	150



## HV 1.70 AND BELOW

---

Packed in 3 layers with 6 pcs per layer (width), and 4 pcs on the top layer.



## HV 2.30 AND 3.50

---

Packed in 3 layers with 6 pcs per layer (width).



## HV PANEL TITAN

---

Packed in 7 layers with 2 pcs per layer (width).

Only the top layer must be packed with the facing upwards; all remaining layers must face downwards.



## SECONDARY HV

---

Packed in 4 layers with 13 pcs per layer (width).

# Packing instructions for other beam systems

SF Columns, soldier beams, steel beams and aluminium beams must be packed as follows:

Item no.	Item	Packed in/on	Quantity
<b>SF Columns</b>			
0120584501	Column Form Titan SF 100/100	Dunnage	20
0120584502	Column Form Titan SF 100/137	Dunnage	20
<b>Soldier Beams</b>			
9010100150/52/54/56	RMS Superslim Soldier (all sizes)	Storage rack	12
<b>Steel Beams</b>			
9078760601/401	Steel beam RSP 300, 3.0 m	Dunnage – 1.20 m	12
<b>Aluminium Beams</b>			
Titan 225	Lengths 1.20 m to 1.80 m	Storage rack (small)	19
	Lengths 2.40 m to 6.00 m	Storage rack	19
Titan 160H	Lengths 1.20 m to 1.80 m	Storage rack (small)	35
	Lengths 2.40 m to 6.00 m	Storage rack	35
Titan 120	All lengths	Storage rack	56
0120750023	Alu Wall Bracket WK 1000	Pall	12





## TITAN 225

---

Packed in 2 layers with 8 pcs per layer (width), and one top layer with 3 pcs.



## TITAN 160 H

---

Packed in 3 layers with 10 pcs per layer (width), and one top layer with 5 pcs.



## COLUMN FORM TITAN

---

Packed on dunnage in 4 layers with 5 pcs per layer.

# Packing instructions for Megashore and Alu Board

Megashore and Alu Board components must be packed as follows:

Item no.	Item	Packed in/on	Quantity
<b>Megashore</b>			
0120150001/03/05	Megashore leg no. 2/3/4/6	Storage rack	30
012015...	Ledger frame (all sizes)	Bundled with steel strapping	20
0220150020	Jack 1.20 m	Storage rack	40
0220150021	Jack 0.40 m (red nut)	Mesh transport box	60
9078270000	Jack 0.20 m (black nut)	Mesh transport box	60
0220150039	Extension outer 0.50 m	Mesh transport box	40
0220150041	Extension outer 1.00 m	Mesh transport box	20
0220150040	Extension outer 1.25 m	Dunnage – 0.95 m	20
0220150051	Extension outer 5.00 m	Storage rack	23
0220200045	Alu Push Pull Prop spindle element	Storage rack	30
0220154553	Swivel head plate	Mesh transport box	
0120154591	Four-way head plate	Mesh transport box	
0620424570	External Alu Beam Titan 225	Mesh transport box	36
0620160002	Alu Scaffold stair 1.60 m	Pallet	10
0620160003	Handrail for Alu Scaffold Stair	Storage rack	10
<b>Alu board</b>			
0620160004/06/07/08	Alu Scaffold board (all sizes)	Dunnage – 0.95 m	30



## JACK 0.40 AND 0.20

In each layer, the equipment must be placed alternately to ensure even load distribution and correct weight balance.

Packed in a mesh transport box.



## JACK 1.20

Packed in 5 layers with 8 pcs per layer (width).

In each layer, the equipment must be placed alternately to ensure even load distribution and correct weight balance.



## LEDGER FRAME

Packed in bundles of 20 pcs.





## MEGASHORE LEG

Packed in 5 layers with 6 pcs per layer (width).

Each layer must be packed in the opposite direction to the layer below.



## ALU SCAFFOLD BOARD

Packed in 3 layers with 10 pcs per layer.

Packed on dunnage.



## ALU SCAFFOLD STAIR

Packed on pallets. Max. 10 pcs per pallet.



## EXTENSION OUTER 0.5 M

Packed in 4 layers with 10 pcs per layer.

Packed in a mesh transport box.



## EXTENSION OUTER 1.0 M

Packed in 4 layers with 5 pcs per layer (width).

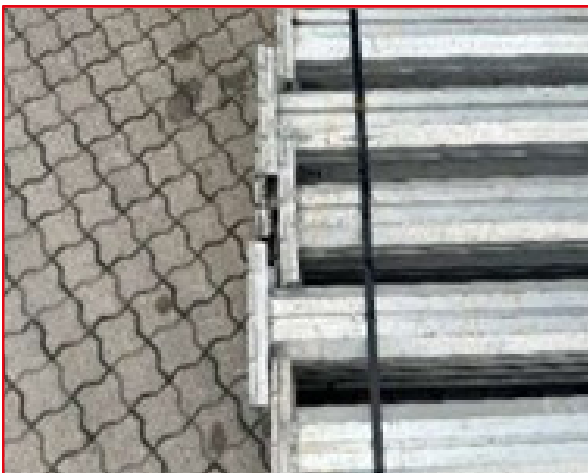
Packed in a mesh transport box.





## EXTENSION OUTER 1.25 M

Packed on dunnage in 4 layers, with 5 pcs per layer (width).



## EXTENSION OUTER 5.0 M

Packed in 3 layers with 6 pcs per layer (width), and one top layer with 5 pcs.





# Packing instructions for RSK and BKS

RSK and BKS support systems for walls and slabs must be packed as follows:

Item no.	Item	Packed in/on	Quantity
<b>RSK</b>			
O220200023	Push Pull Prop Titan RSK 1	Mesh transport box	
O220200039	Push Pull Prop Titan RSK 3	Storage rack	40
O220200041	Push Pull Prop Titan RSK 4	Storage rack	40
O220200042	Push Pull Prop Titan RSK 6	Storage rack	40
O220200043	Push Pull Prop Titan RSK 8	Storage rack	24
	Pin Handle / Swivel End	Mesh transport box	
<b>BKS</b>			
O120220001	Spindle Element Titan BKS	Storage rack (small)	15
O120220005	Extension 2400 mm Titan BKS	Storage rack	15
O120220009	Extension 3700 mm Titan BKS	Storage rack	15



## RSK 3, 4 AND 6

Packed in 4 layers with 10 pcs per layer.

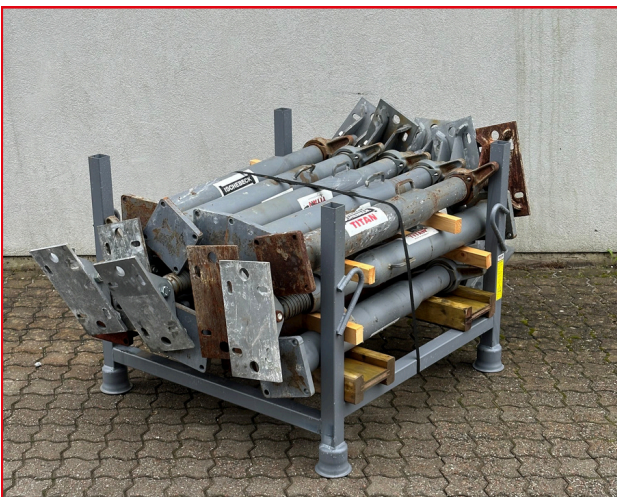
Dunnage must be placed between each layer.



## RSK 8

Packed in 3 layers with 8 pcs per layer.

Dunnage must be placed between each layer.



## SPINDLE ELEMENT

Packed in 3 layers with 5 pcs per layer (width), with dunnage between each layer.



## EXTENSION 2400/3700

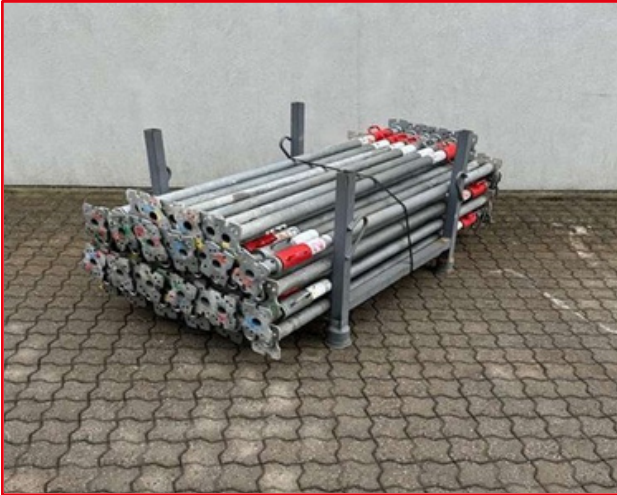
Packed in 3 layers with 5 pcs per layer (width).

# Packing instructions for steel props & accessories

Steel props and accessories for steel props must be packed as follows:

Item no.	Item	Packed in/on	Quantity
<b>Steel props</b>			
0120100001	Steel Prop Titan 2	Storage rack (small)	50
0120100005	Steel Prop Titan 3	Storage rack	50
0120100009	Steel Prop Titan 4	Storage rack	40
0120100016	Steel Prop Titan 7	Storage rack	40
9078220005	Steel Prop Eco 20	Storage rack (small)	40
<b>Steel props accessories</b>			
1420140020	Timber Bracing Clamp	Mesh transport box	
0620140010	Universal Tripode	Tripode storage rack	30
0620140017	4-Way Head Titan 200 / H20	Mesh transport box	100





## TITAN 2

Packed in 4 layers with 11 pcs per layer, and one top layer with 6 pcs.



## TITAN 3

Packed in 7 layers with 7 pcs per layer, and 1 pcs on the top.



## TITAN 4 AND 7

Packed in 5 layers with 8 pcs per layer.



## STEEL PROP ECO 20

Packed in 4 layers with 9 pcs per layer, and one top layer with 4 pcs.



## 4-WAY HEAD TITAN

Packed in layers of 25, 16, 25, 16 and 18 pcs.

The first layer must be packed with the locking pin facing upwards; the next layer with the locking pin facing downwards, and so on.







## UNIVERSAL TRIPOD

Packed in a tripod storage rack.

6 stacks with 5 pcs per stack.





# Packing instructions for fall protection systems

TITAN EPS, Trapoflex and related systems must be packed as follows:

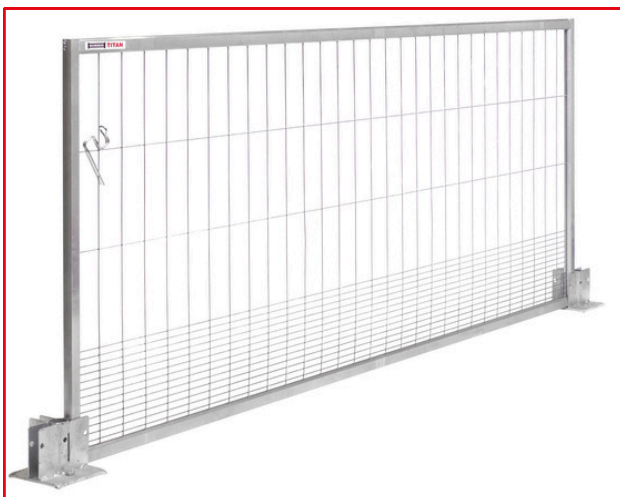
Item no.	Item	Packed in/on	Quantity
<b>EPS</b>			
0620620030	EPS Screen 3000	EPS storage rack	25
0620620034	EPS Floor Bracket	Mesh transport box	
0620620042	EPS Beam Bracket	Mesh transport box	
0620620043	EPS Slot-in-Post	Storage rack	
0620620040	EPS Multi-Clamp	Mesh transport box	
<b>Trapoflex</b>			
9010120100	Trapoflex Working Platform Small	Pallet	
9010120102	Trapoflex Working Platform Medium	Pallet	
9010120104	Trapoflex Working Platform Large	Pallet	
9010120106	Trapoflex Working Platform Xtra Large	Pallet	
<b>NOEtop Working Platform</b>			
9078550065	NOEtop Working Platform 2650	Pallet	5
9078550070	NOEtop Working Platform 1325	Pallet	5



## TRAPOFLEX

---

Packed on 2 pallets.



## EPS

---

EPS Screen 3000 is packed with a maximum of 25 pcs per EPS storage rack. Other EPS components are packed in a small storage rack or mesh transport box. See table for details.



## NOETOP WORKING PLATFORM

---

Packed in stacks of 5 units.



## Examples of correct and safe packing for transport

Pack as shown below





## Examples of incorrect and unsafe packing for transport

### Do not pack as shown below







# Thank you for your cooperation!

By following these return instructions, you help ensure safe handling, efficient logistics, and reduced costs for both parties.

All equipment returned in good condition, properly cleaned and packed in accordance with these instructions, can be quickly prepared for the next project — benefiting both the environment and future construction sites.

If you have any questions regarding returns, packing, or additional hire equipment, please contact us.

Kind regards,  
***Ischebeck Nordic team***